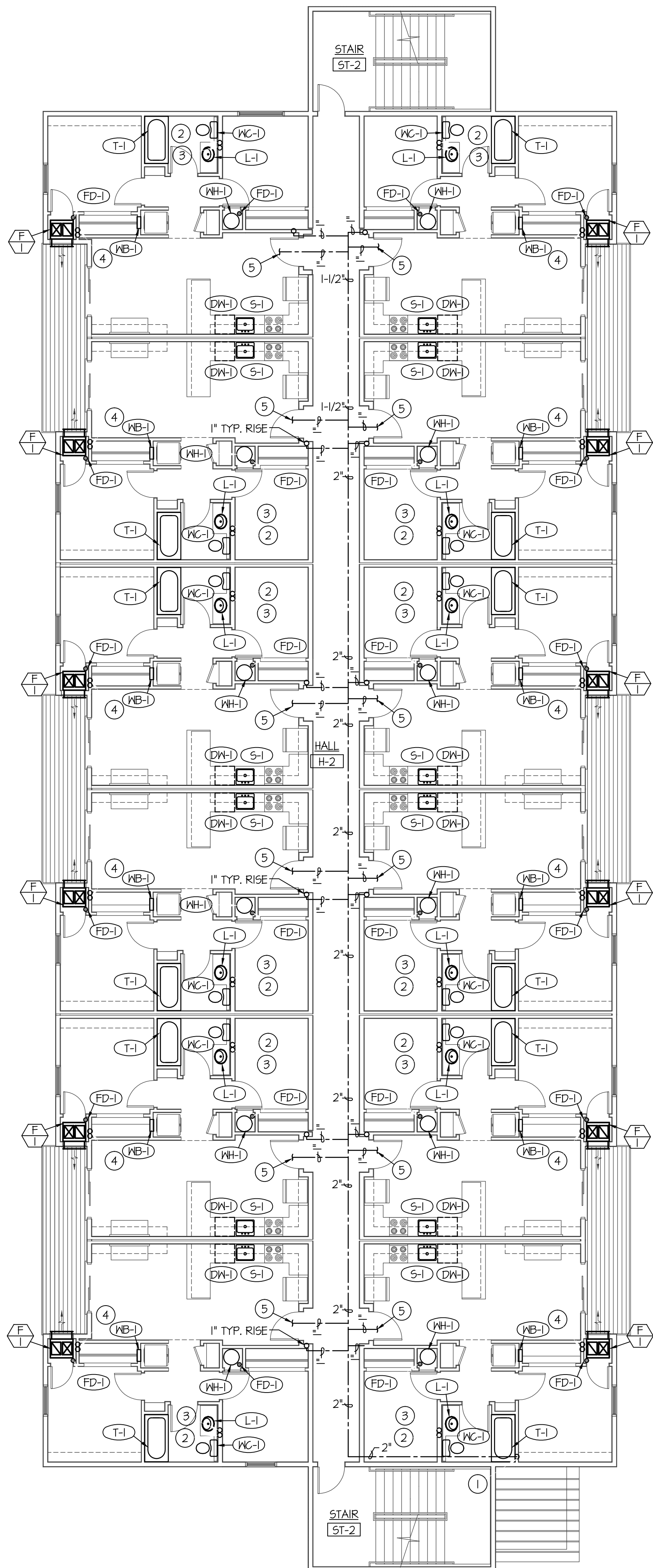


F:\17042 JUNIPER SANDS APTS\17042 P1.4.dwg Jun 19, 2017 - 3:23pm

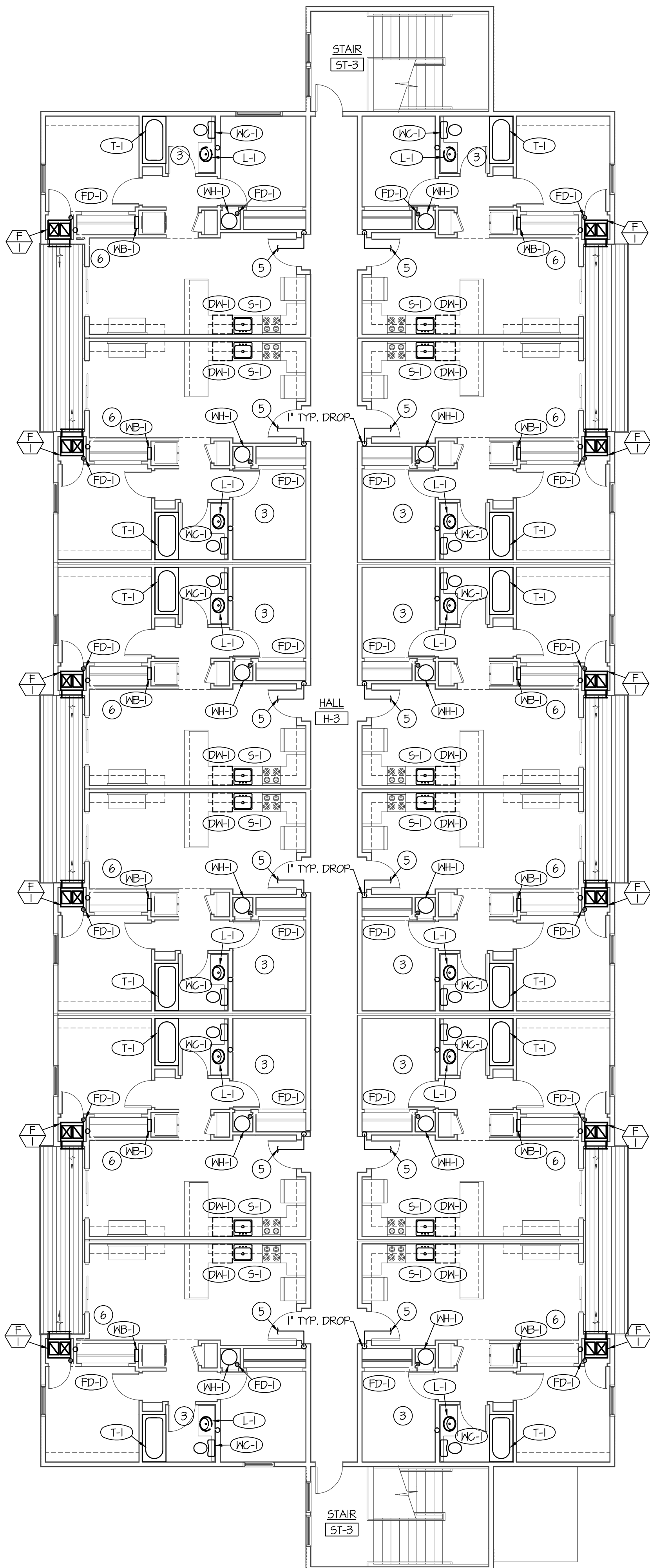


NOTE:

SEE TYPICAL APT. LARGE SCALE PLUMBING FLOOR PLANS ON SHEET P2.0 FOR PIPING AND EQUIPMENT LOCATED IN EACH APT.

BLDG. 2 - 2ND LEVEL PLUMBING FLOOR PLAN

SCALE: 1/8" = 1'-0"



BLDG. 2 - 3RD LEVEL PLUMBING FLOOR PLAN

SCALE: 1/8" = 1'-0"



PLAN NOTES:

- 2" CW UP IN WALL FROM BELOW TO SERVE 2ND AND 3RD LEVEL APTS. ABOVE. SEE SHEET P1.1 FOR CONTINUATION OF PIPING.
- 4" WASTE STACK UP IN WALL TO 3RD LEVEL FLOOR ASSEMBLY.
- 4" VENT STACK UP IN WALL TO 4" VTR ON ROOF.
- (2) 3/4" GAS LINES UP IN WALL FROM BELOW TO SERVE 2ND AND 3RD LEVEL FURNACES. SEE SHEET P1.3 FOR CONTINUATION OF GAS LINES BELOW. SEE LARGE SCALE PLUMBING PLANS ON SHEET P2.0 FOR CONNECTION TO FURNACES AND SHUT-OFF VALVES.
- SEE TYPICAL LARGE SCALE APT. PLUMBING PLANS ON SHEET P2.0 FOR CONTINUATION OF 1" WATER PIPING SERVING INDIVIDUAL APARTMENTS.
- (1) 3/4" GAS LINE UP FROM BELOW TO SERVE FURNACE ON 3RD LEVEL. SEE SHEET P1.3 FOR CONTINUATION OF GAS LINES BELOW. SEE LARGE SCALE PLUMBING PLANS ON SHEET P2.0 FOR CONNECTION TO FURNACES AND SHUT-OFF VALVES.

BRENT A. MCFARLAND AR-2561

STATE OF IDAHO

JRW & ASSOCIATES

1152 BOND AVENUE - SUITE A REGBURG, IDAHO 83440
WWW.JRW.COM VOICE (208) 359-2009 FAX (208) 359-2271

CONSULTANTS:

PROJECT: JUNIPER SANDS APARTMENTS

REGBURG, IDAHO

DRAWING TITLE: BLDG. 2 - 2ND & 3RD LEVEL PLUMBING PLANS

REVISION:		
#	DATE	COMMENT
DRAWN BY:	SR	JOB NO: 694
CHECKED BY:	DCS	DATE: JUNE 2017

PLOT DATE:

DRAWING NO. 17042 P1.4.dwg

P1.4

OF -

ORIGINAL DRAWING SIGNED BY: DWAYNE C. SUDWEEKS
DATE ORIGINAL SIGNED: Jun 19, 2017
ORIGINAL ON FILE AT ENGINEERED SYSTEMS ASSOCIATES
1355 EAST CENTER, POCAHELLO, IDAHO 83201

Engineered Systems Associates

1355 EAST CENTER
POCAHELLO, IDAHO 83201
PHONE: (208) 233-0501
FAX: (208) 233-0529
EMAIL: esa@engsystems.com
ESA JOB NUMBER: 17042

